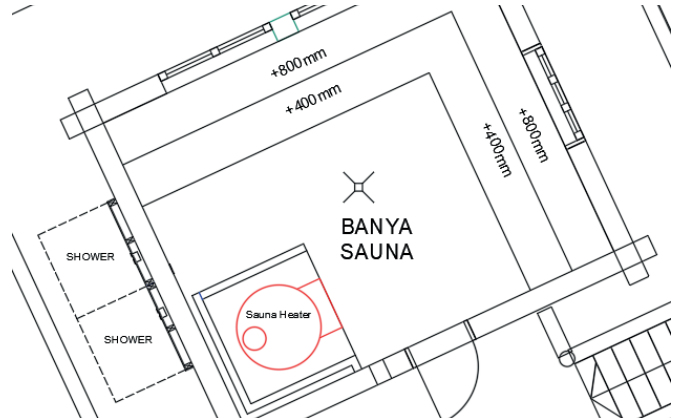


BANYA (BANJA) SAUNA



Dimension:

recommended size between 5 m² - 35 m² (53 sq-ft – 380 sq-ft)

Weight:

depends on cabin size; approx. 150kg / m² (approx. 33 lbs / sq-ft)

Power supply:

Total power consumption depends on the size of the room. In principle, several supply lines are required:
for room size 15 m² (160 sq-ft.):

- Three-Phase supply line 3 x 400 V AC + N / 50 Hz / fusing 3 x 50 A; Power 27.000 Watt
- Single-Phase supply line 1 x 230 V AC + N / 50 Hz / fusing 1 x 10 A; Power 500 Watt

Supply line installed to our electric box in plant room.

Required space for technique in plant room:

Height x Width x Depth approx. 1000mm (39") x 600mm (24") x 250mm (10")

Ventilation:

The number of ventilation outlets and the ventilation rate depends on the size of the room.

For room size 15 m² (160 sq-ft.):

Exhaust air-duct diameter 150mm (6"), ending above the cabins ceiling at FFL+260cm (103"), Ventilation rate: 180 m³/h (6.300 cu.ft / h); fan by others!

Incoming air-duct diameter 150mm (6"), ending above the cabins ceiling at FFL+260cm (103"), Ventilation rate: 180 m³/h (6.300 cu.ft / h); fan by others!

Electric Energy Consumption:

For room size 15 m² (160 sq-ft.): approx. 189 kWh per day; approx. 57 Euro per day

Water consumption:

Approx. 200 liters (26 gal) per day (steam infusion);

approx. 0,50 Euro per day